

**“We are truly grateful
for CHECT and the
amazing work they
are doing with
families like mine”**

WHAT WE ACHIEVED 24-25

What is retinoblastoma (Rb)?

Each week, a child living in the UK is diagnosed with Rb, a rare form of eye cancer that typically affects children under 6 years old. Although 98% survive, almost half of all children diagnosed will lose an eye and some will lose their sight.

There is an increased chance of developing second primary cancers elsewhere in the body if the Rb is hereditary or if radiotherapy has been used as part of the treatment plan. For the 45% of affected children whose Rb is heritable, there is also a risk of passing the retinoblastoma on to one's own future children.

Who we are

We are the only charity in the UK solely dedicated to helping anybody affected by retinoblastoma.

At the heart of what we do is our belief that by driving early diagnosis through raising awareness, funding vital research, and offering lifelong support to those affected, we can lessen the impact of Rb, now and in the future.

For the last 38 years, we've been supporting individuals and families affected by Rb. We started out as The Retinoblastoma Society in the 1980s and evolved into Childhood Eye Cancer Trust in the 2000s. You can learn more about our history at www.checht.org.uk/about-us.

Our objectives

Support

Offering support and a sense of community from diagnosis, during treatment and throughout the lives of anyone affected by Rb.

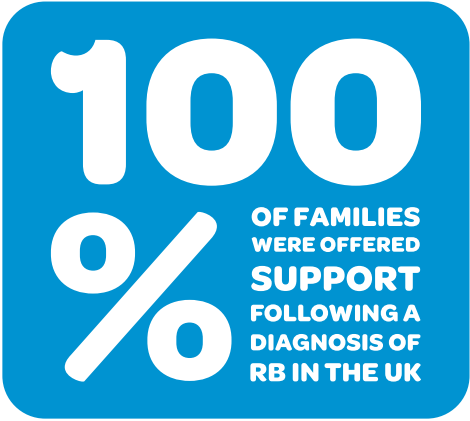
Awareness

Working with healthcare professionals and the public to ensure faster diagnosis and better outcomes for those affected by Rb. Our work involves educating both groups about the signs and symptoms of Rb, emphasising urgent referrals and prompt medical attention.

Research

Proactively engaging in the advancement of knowledge of Rb, its treatment and its impact through the awarding of grants to groups or individuals who wish to pursue research projects or audits to advance knowledge of Rb and related issues.

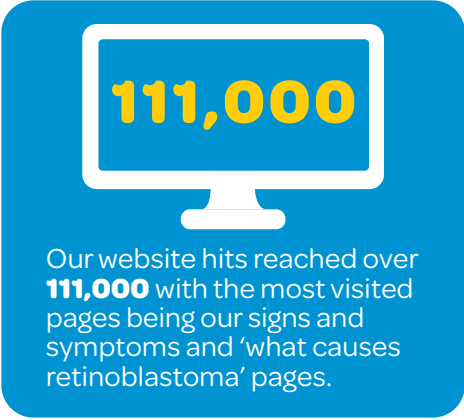
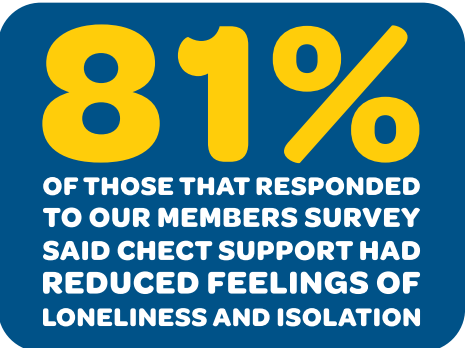
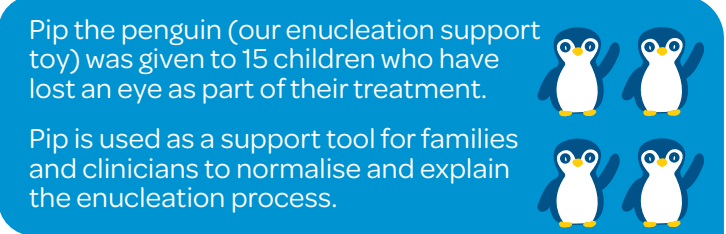
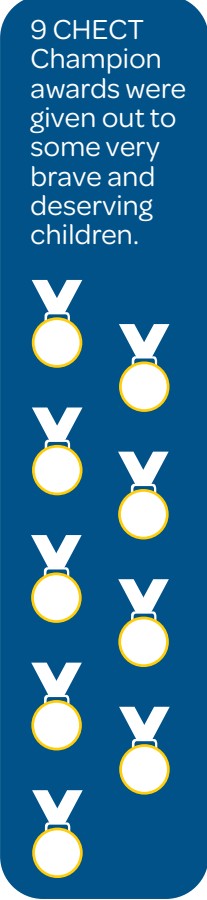
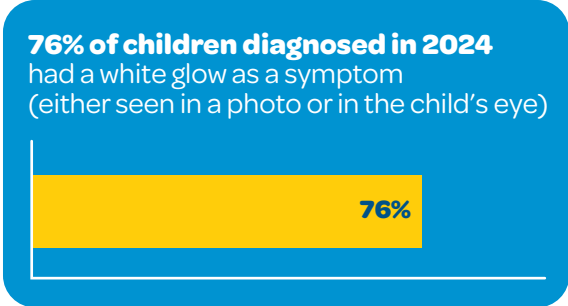
In the last year...



Support



Awareness



Research



Future plans

- We plan to fund **£130,098** for new research.
- We plan to offer at least **£8,000** in support grants to families and individuals in need.
- We plan to continue offering support to **100%** of families and individuals affected by Rb.
- We plan to reward **£1,000** to those with a special interest in music through our Ffion Miles Bursary.

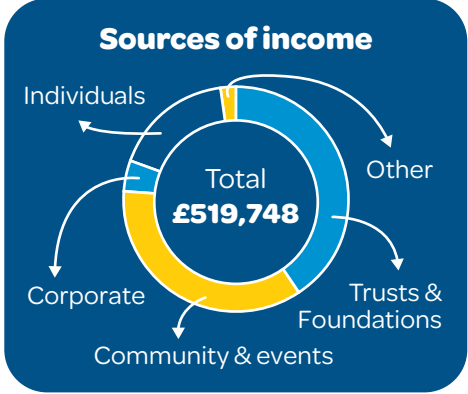
Funding

Throughout the last year the generosity, creativity, and commitment of our supporters enabled the charity to exceed the budgeted income target, despite the many challenges faced by the wider charitable sector.

From individual challenges and community events to corporate partnerships, every donation has gone towards supporting those affected by Rb, raising awareness and investing in ground-breaking research.

We are incredibly grateful and overwhelmed by the passion and dedication of our supporters who go to such lengths to raise funds for us.

Thank you.



“ The guides, resources and real-life stories of families affected by retinoblastoma which are available through CHECT continue to be an invaluable source of information for us ”

“ Thank you to everyone who has supported us over the last year – whether you shared your story, donated, volunteered, organised or attended an event, took on a challenge, liked or shared our social media posts.

We simply could not do what we do without you ”

Scan to donate and help us to continue our vital work



childhood-eye-cancer-trust
/chectuk

020 7377 5578
info@chect.org.uk
@chectuk
/CHECTUK
@chect_uk
chect_uk